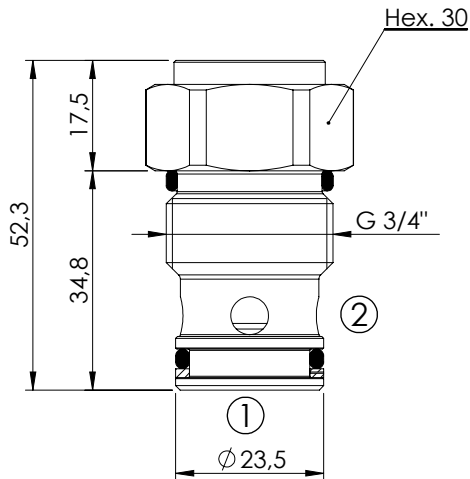
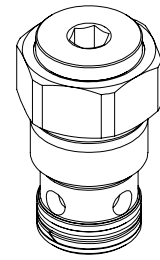


CHECK VALVE

CDVN-060-PSNR

POPPET TYPE



SPECIFICATIONS

Max. operating pressure: 350 bar

Rated flow: 60 l/min

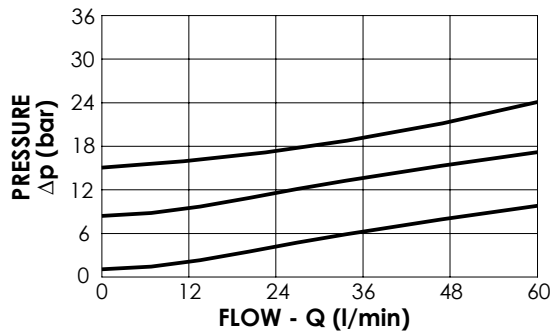
Cavity: VP000006

Weight: 0,18 kg

NOTES

Installation torque: 100 - 130 Nm

Seal kit: RC700006



ORDERING CODES

Quick code	Description	Cracking pressure (bar)	
CD000019	CDVN-060-PSNR-FN-006-N001	1	
CD000020	CDVN-060-PSNR-FN-006-N009	9	
CD000075	CDVN-060-PSNR-FN-006-N015	15	